

---

**Rockhaven Resources Ltd. Intersects 94.09 g/t Gold and 545 g/t Silver over 2.63 m and 17.80 g/t Gold and 257 g/t Silver over 6.54 m at Klaza Project, Yukon**

**October 16, 2017 - Rockhaven Resources Ltd.** (TSX-V:RK) ("Rockhaven") is pleased to announce assay results for an additional seven diamond drill holes from the 2017 exploration program at its 100% owned Klaza gold-silver property, located in the Dawson Range Gold Belt of southern Yukon.

A total of 15,922 m in 96 holes were completed during the 2017 exploration program. Results from the first 49 holes were released on September 12 and September 26, 2017. Holes in this release are from the Western BRX Zone, where infill drilling in 2017 was designed to better define near-surface mineralization so that inferred resources can be upgraded to indicated resources.

**Assay highlights from this news release include:**

- **94.09 g/t gold, 545 g/t silver, 2.86% lead and 4.21% zinc over 2.63 m including 196 g/t gold, 608 g/t silver, 1.24% lead and 7.29% zinc over 0.91 m – Hole 401**
- **17.80 g/t gold, 257 g/t silver, 1.28% lead and 1.81% zinc over 6.54 m – Hole 398**
- **30.80 g/t gold, 86.8 g/t silver, 1.19% lead and 0.85% zinc over 2.32 m – Hole 396**
- **9.01 g/t gold, 150 g/t silver, 0.57% lead and 1.68% zinc over 2.53 m – Hole 400**
- **23.90 g/t gold, 222 g/t silver, 3.11% lead and 2.06% zinc over 1.10 m – Hole 397**

“The infill drill program at the Western BRX Zone is confirming both the exceptional vein continuity and the high-grade nature of mineralization at one of the premier gold deposits in Yukon,” stated Matt Turner, Rockhaven’s CEO. “All of the results presented in this release are from holes that targeted mineralization less than 100 m vertically below surface but beneath the proposed open pit, as presented in the 2016 Preliminary Economic Assessment (PEA). Based on these excellent results it is possible that the envisioned open pit at the Western BRX Zone will be deepened, increasing the proportion of mineral resources extracted from lower-cost, open-pit mining in the first years of operations.”

**Western BRX Zone**

The Western BRX Zone currently hosts an inferred mineral resource estimate of **1,368,000 tonnes containing 352,000 oz gold, 5,813,000 oz silver, 39.4 million lbs lead and 42.8 million lbs zinc at an average grade of 8.01 g/t gold, 132 g/t silver, 1.31% lead and 1.42% zinc** (See March 1, 2016 Preliminary Economic Assessment on the Rockhaven website ([www.rockhavenresources.com](http://www.rockhavenresources.com))).

Mineralized veins are emplaced adjacent to a feldspar porphyry dyke that can be traced along the length of the zone. Since its discovery in 2011, a total of 9 excavator trenches

and 68 diamond drill holes have traced mineralization over a 500 m strike length and from surface to a maximum depth of 520 m down-dip.

Results from another 10 holes that tested the Western BRX Zone and the 30 holes that tested other zones on the Klaza property will be released upon receipt of assays.

Maps and sections from the 2017 exploration program can be viewed at Rockhaven's website.

Significant new drill results from the Western BRX Zone and a subsidiary vein in the hanging wall are shown in Table I.

**Table I – Significant Assay Results  
(Western BRX Zone=WBRX and Subsidiary Vein=Bonus)**

Drill Hole	Zone ID	From (m)	To (m)	Interval (m) <sup>+</sup>	Gold (g/t)	Silver (g/t)	Lead (%)	Zinc (%)
KL-17-396	WBRX	109.12	116	6.88	13.10	78.7	1.094	1.212
including	WBRX	<b>110.45</b>	<b>112.77</b>	<b>2.32</b>	<b>30.80</b>	<b>86.8</b>	<b>1.193</b>	<b>0.847</b>
including	WBRX	110.45	110.95	0.50	64.10	177	0.416	0.602
KL-17-397	WBRX	<b>67.90</b>	<b>69.00</b>	<b>1.10</b>	<b>23.90</b>	<b>222</b>	<b>3.110</b>	<b>2.060</b>
KL-17-398	WBRX	<b>119.62</b>	<b>126.16</b>	<b>6.54</b>	<b>17.80</b>	<b>257</b>	<b>1.276</b>	<b>1.810</b>
including	WBRX	119.62	120.11	0.49	57.90	1055	3.340	3.420
including	WBRX	122.62	126.16	3.54	24.35	319	1.835	2.750
including	WBRX	124.00	124.52	0.52	62.60	550	1.660	3.690
KL-17-399	Bonus	8.09	9.18	1.09	1.70	14.15	0.142	0.256
and	WBRX	74.91	75.49	0.58	1.28	26.8	0.161	0.214
KL-17-400	Bonus	27.14	29.57	2.43	1.32	0.77	0.018	0.193
and	Bonus	34.34	35.48	1.14	1.82	8.8	0.150	0.091
and	WBRX	<b>100.11</b>	<b>102.64</b>	<b>2.53</b>	<b>9.01</b>	<b>150</b>	<b>0.570</b>	<b>1.679</b>
including	WBRX	100.11	100.71	0.60	28.90	416	1.495	4.54
KL-17-401	Bonus	54.06	57.00	2.94	3.49	37.1	0.398	1.199
including	Bonus	56.56	57.00	0.44	18.55	189	1.700	5.070
and	WBRX	<b>108.63</b>	<b>111.26</b>	<b>2.63</b>	<b>94.09</b>	<b>545</b>	<b>2.858</b>	<b>4.213</b>
including	WBRX	<b>109.81</b>	<b>110.72</b>	<b>0.91</b>	<b>196.00</b>	<b>608</b>	<b>1.235</b>	<b>7.290</b>
KL-17-402	WBRX	107.96	108.29	0.33	11.60	105	0.374	0.233
and	WBRX	112.86	114.6	1.74	4.44	5.75	0.059	0.151
including	WBRX	114.04	114.6	0.56	12.40	14.15	0.156	0.377
and	WBRX	118.78	119.23	0.45	14.65	105	0.847	1.915

+ Represents the diamond drill hole or trench sample length. True widths are estimated to be approximately 80-90% of the interval.

All analyses for rock and core samples from the 2017 program were performed by ALS Minerals with sample preparation in North Vancouver, Whitehorse, Yellowknife or Thunder Bay and assays and geochemical analyses in North Vancouver. Core samples were routinely analyzed for gold by fire assay followed by atomic absorption (Au-AA24) and 48 other elements by inductively coupled plasma-mass spectrometry (ME-MS61). Samples that exceeded the detection limits of the routine methods were assayed for silver, copper, lead and zinc by inductively coupled plasma-atomic emission spectroscopy (Ag/Cu/Pb/Zn - OG62) and gold by gravimetric analysis (Au-GRA22). Rigorous procedures were in place regarding sample collection, chain of custody and data entry. Certified assay standards, coarse reject duplicates, field duplicates and blanks were routinely inserted into the sample stream to ensure integrity of the assay process. All of the results reported have passed the QAQC screening.

Additional information about the Klaza property Mineral Resource and Preliminary Economic Assessment is summarized in Rockhaven's March 1, 2016 technical report titled, "Technical Reports and PEA for the Klaza Au-Ag deposit, Yukon Canada for Rockhaven Resources Ltd." which can be viewed at [www.sedar.com](http://www.sedar.com) under the Rockhaven profile or on the Rockhaven website at [www.rockhavenresources.com](http://www.rockhavenresources.com).

The 2017 program was managed by Archer, Cathro & Associates (1981) Limited (Archer Cathro). Technical information in this news release has been approved by Matthew R. Dumala, P.Eng., a geological engineer with Archer Cathro and qualified person for the purpose of National Instrument 43-101.

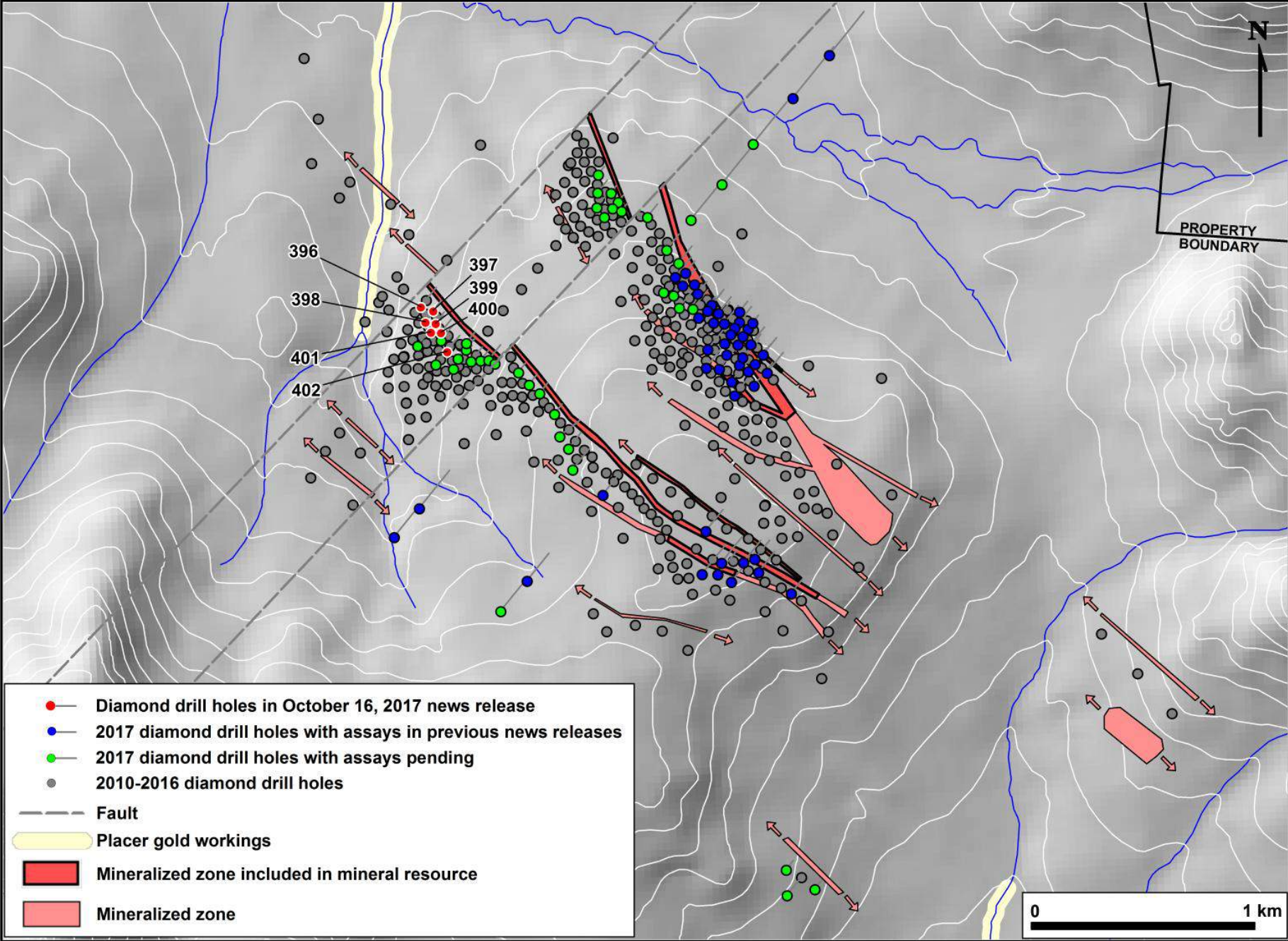
### **About Rockhaven**

Rockhaven Resources Ltd. is a mineral exploration company focused on growth through the advancement of its Klaza project. For additional information concerning Rockhaven or its Klaza project please visit Rockhaven's website at [www.rockhavenresources.com](http://www.rockhavenresources.com).

Matthew Turner  
President, CEO and Director  
**Rockhaven Resources Ltd.**  
T:604-687-2522  
[mturner@rockhavenresources.com](mailto:mturner@rockhavenresources.com)

NEITHER THE TSX VENTURE EXCHANGE NOR ITS REGULATION SERVICES PROVIDER (AS THAT TERM IS DEFINED IN THE POLICIES OF THE TSX VENTURE EXCHANGE) ACCEPTS RESPONSIBILITY FOR THE ADEQUACY OR ACCURACY OF THIS RELEASE.

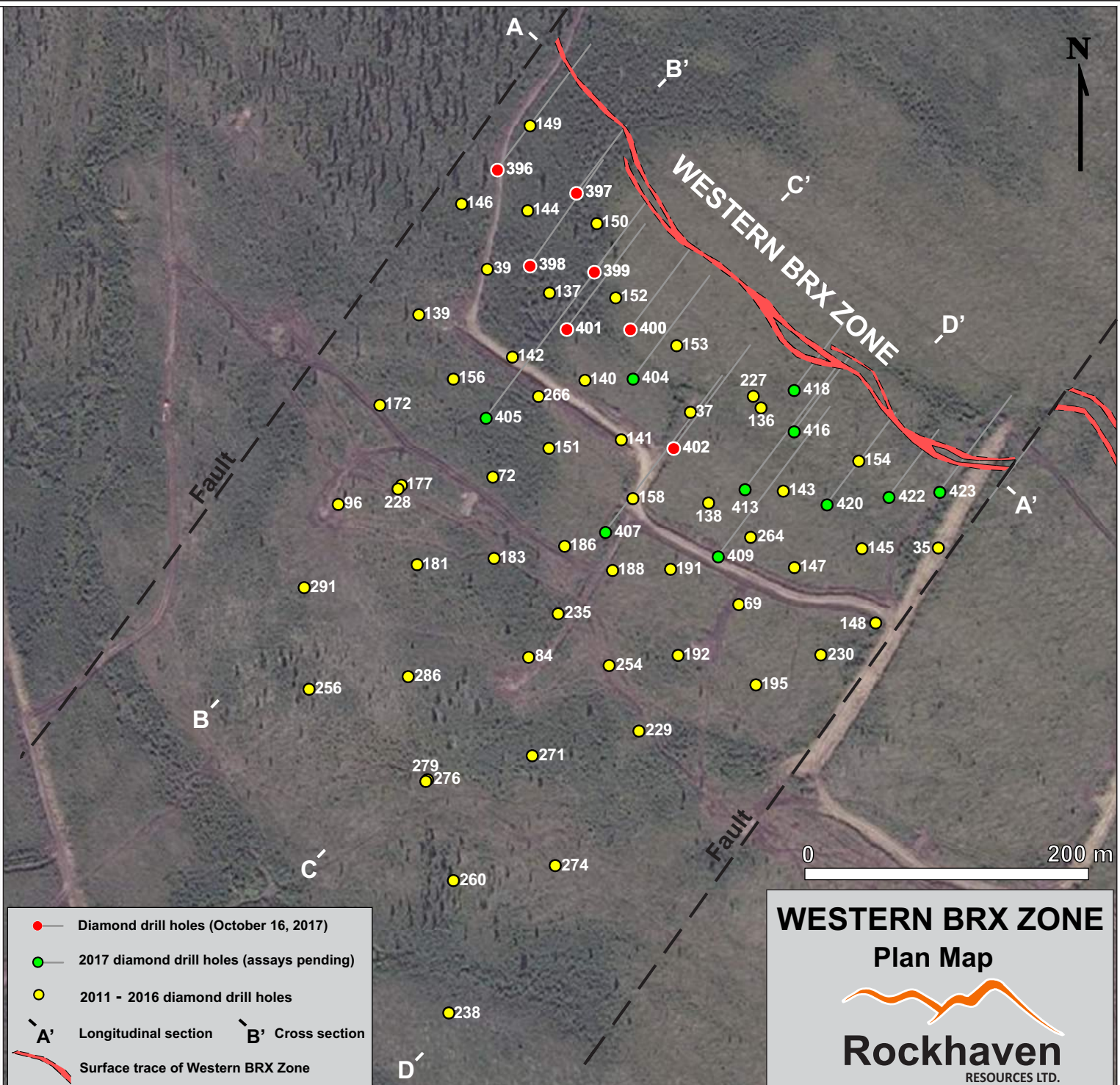
# 2010-2017 KLAZA EXPLORATION





### WBRX ZONE DRILL HIGHLIGHTS

Drill hole	Width (m)	Au (g/t)	Ag (g/t)
37	1.22	34.00	298
39	1.65	23.50	239
96	2.32	25.10	621
137	1.31	56.40	318
141	1.10	29.90	660
143	1.65	28.90	669
144	1.01	29.30	37
145	2.90	10.79	121
147	1.89	15.95	123
150	2.98	26.71	172
151	3.21	22.43	245
153	2.06	14.30	142
154	1.00	66.20	403
156	0.97	14.30	513
158	0.50	42.00	432
172	1.01	27.80	656
181	1.11	20.73	235
186	2.18	10.23	298
188	1.47	21.50	323
238	1.37	16.29	1,435
264	1.05	18.70	489
271	2.00	14.88	162
291	4.43	5.89	76
396	2.32	30.80	87
397	1.10	23.90	222
398	6.54	17.80	257
400	2.53	9.01	150
401	2.63	94.09	545



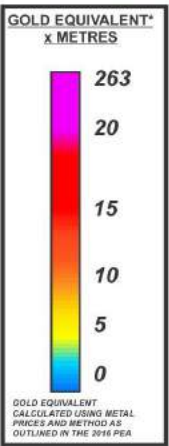
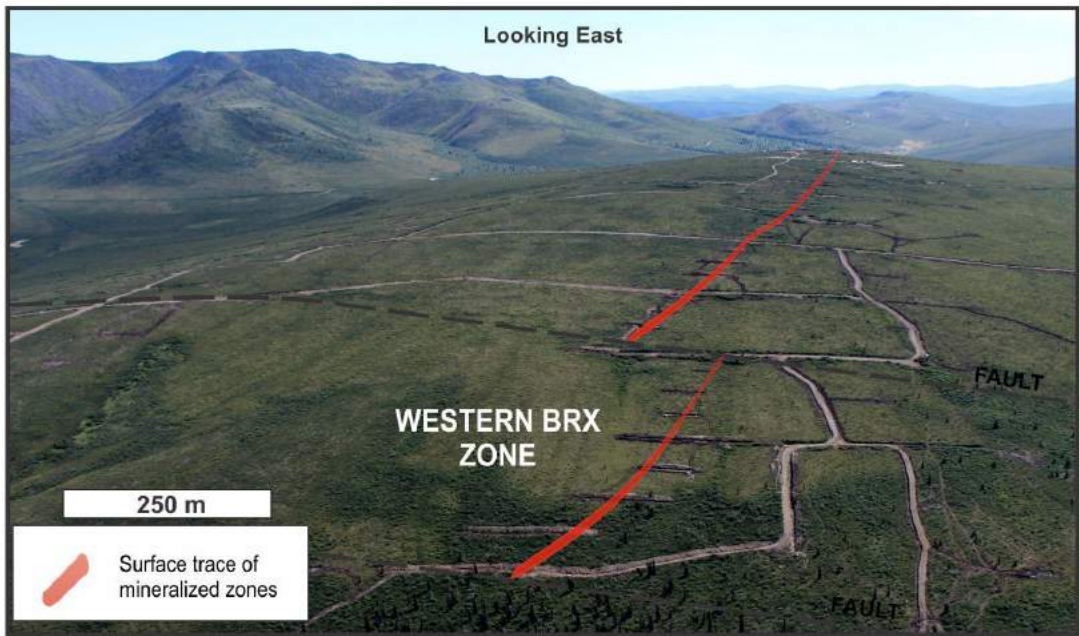
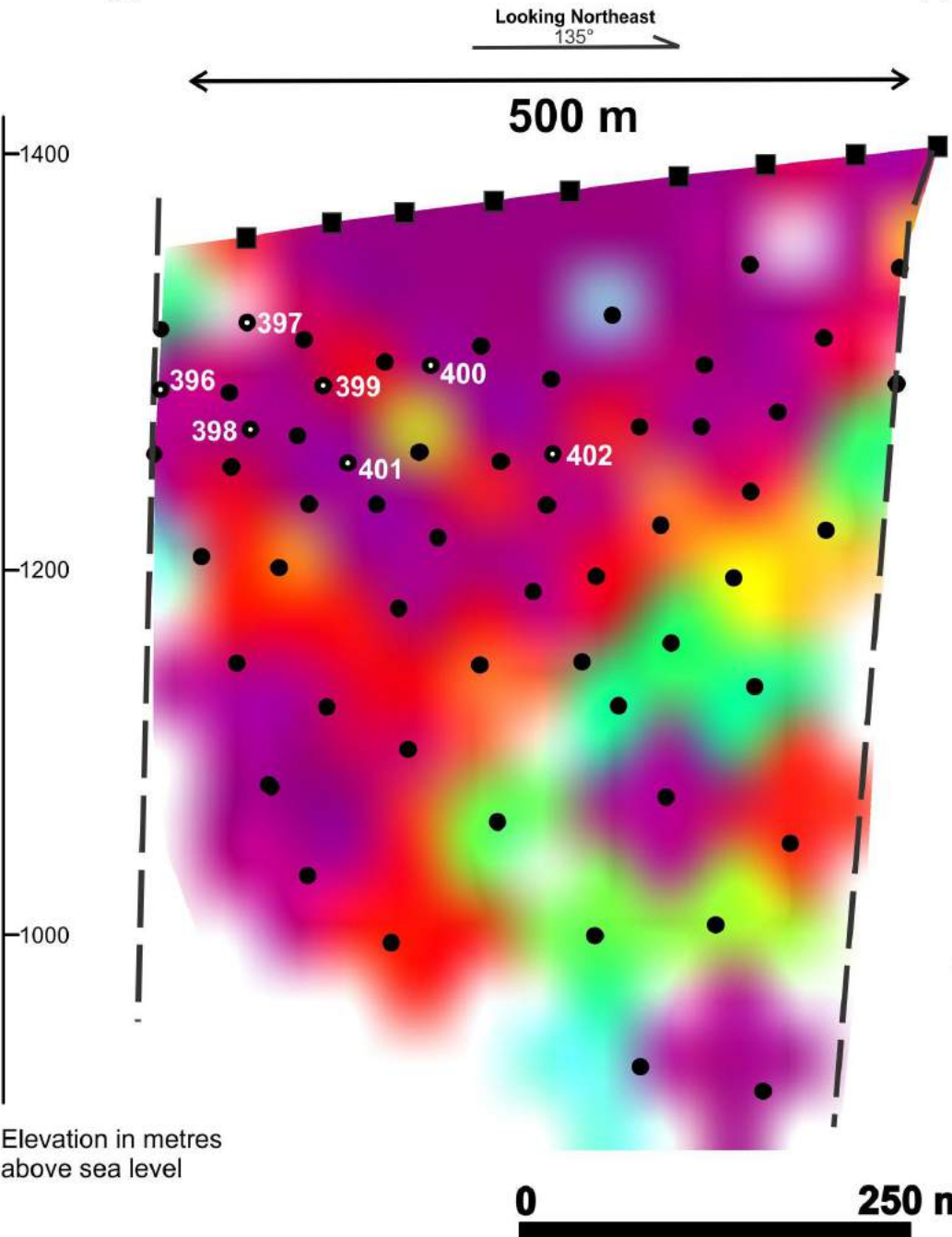
- Diamond drill holes (October 16, 2017)
- 2017 diamond drill holes (assays pending)
- 2011 - 2016 diamond drill holes
- A' Longitudinal section
- B' Cross section
- Surface trace of Western BRX Zone

**WESTERN BRX ZONE**  
Plan Map

**Rockhaven**  
RESOURCES LTD.



# Western BRX Zone



### WESTERN BRX ZONE DRILL HIGHLIGHTS OCTOBER 16 2017 PRESS RELEASE

Drill hole	Width (m)	Au (g/t)	Ag (g/t)	Pb (%)	Zn (%)
396	2.32	30.80	87	1.19	0.85
397	1.10	23.90	222	3.11	2.06
398	6.54	17.80	257	1.28	1.81
400	2.53	9.01	150	0.57	1.68
401	2.63	94.09	545	2.86	4.21

- Trench exposure
- Drill intercept along plane with 2017 drill hole number
- Fault

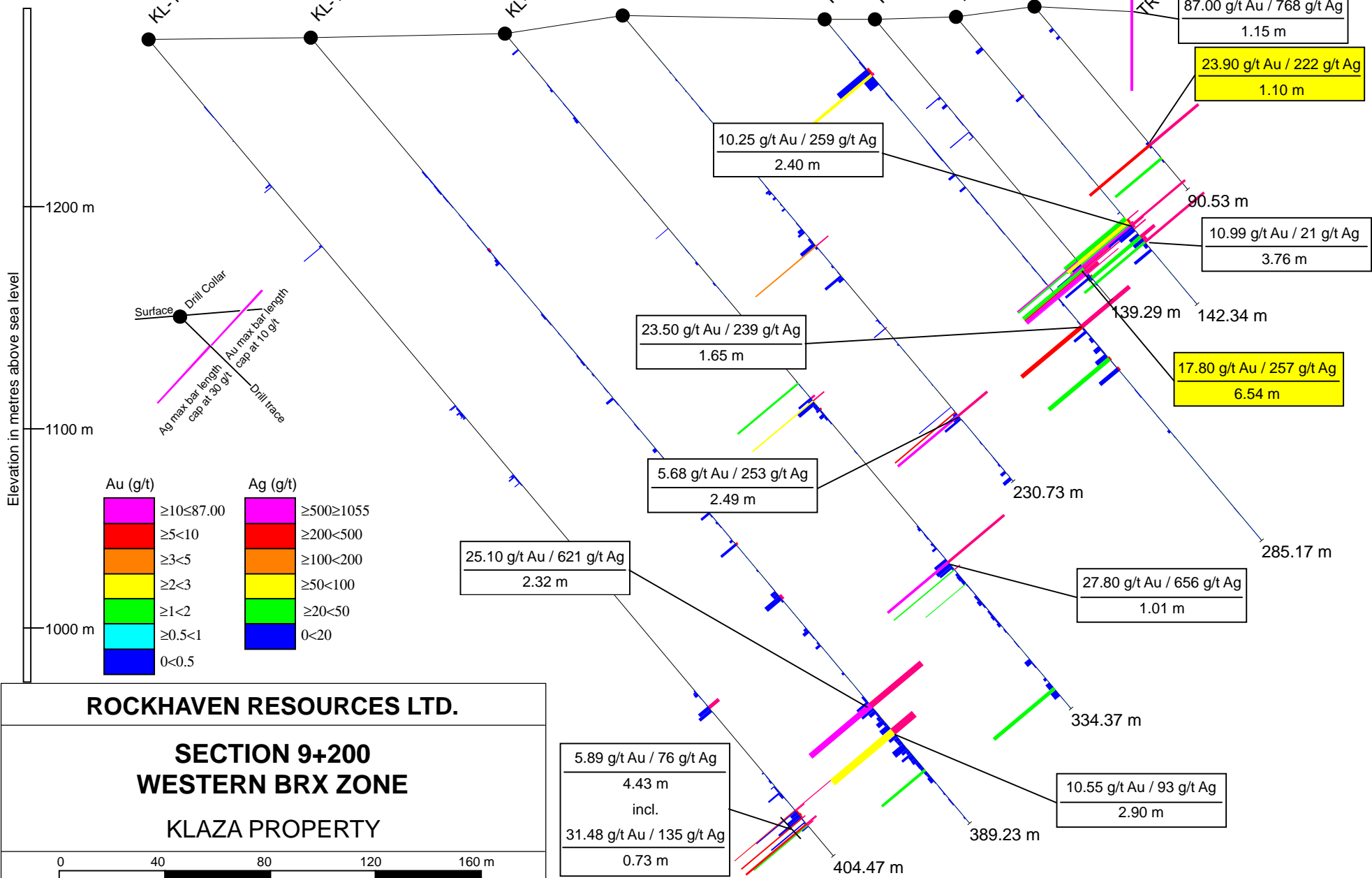
**Simplified Gold EQ Grade-Thickness  
Inclined Longitudinal Section**

**Rockhaven**  
RESOURCES LTD.

035  
Looking northwest

**B**

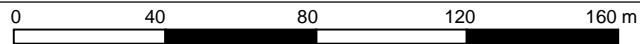
**B'**



**ROCKHAVEN RESOURCES LTD.**

**SECTION 9+200  
WESTERN BRX ZONE**

**KLAZA PROPERTY**



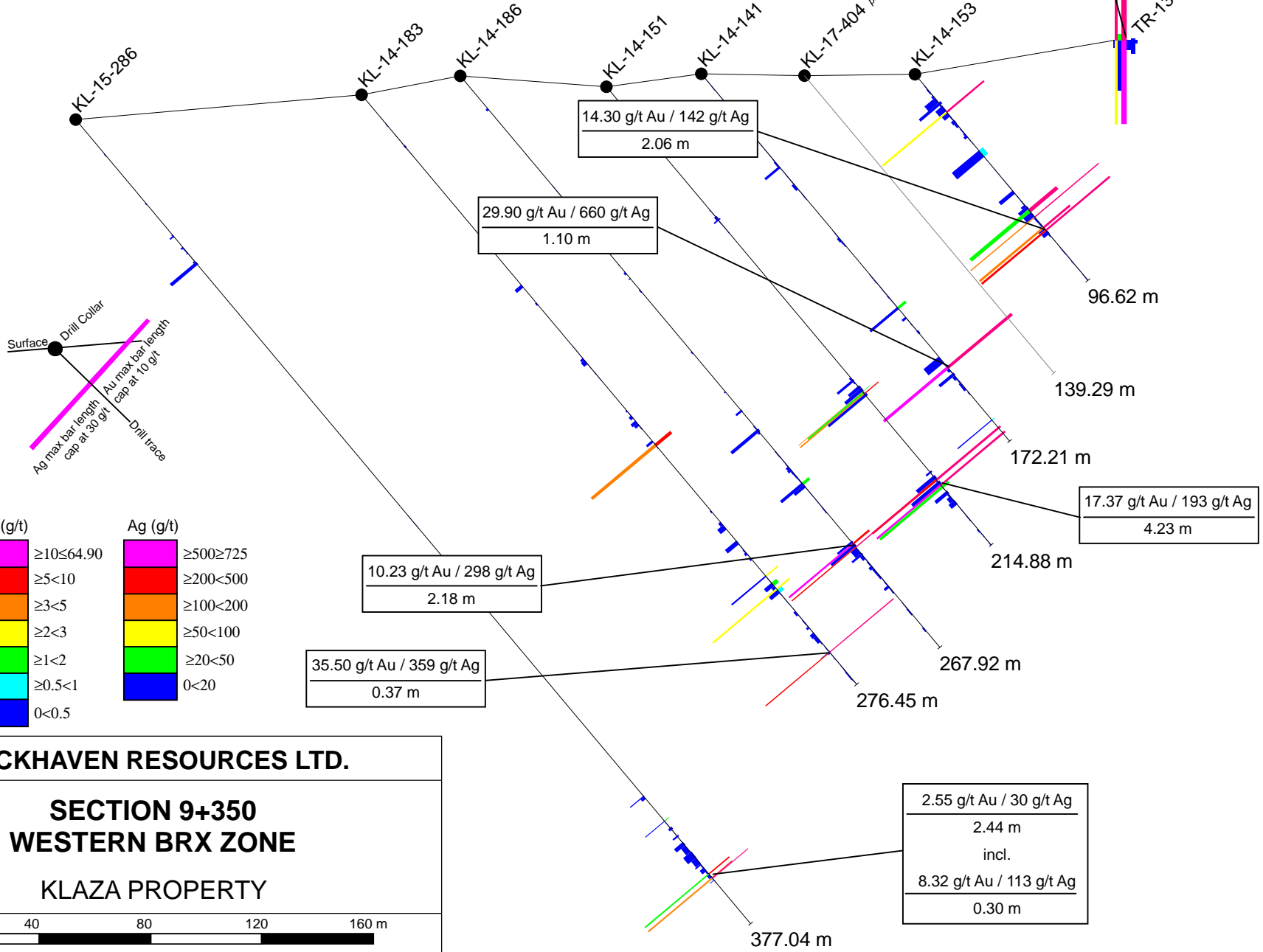
OCT 2017

C

035  
Looking northwest

C'

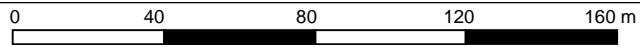
Elevation in metres above sea level  
1300 m  
1200 m  
1100 m



ROCKHAVEN RESOURCES LTD.

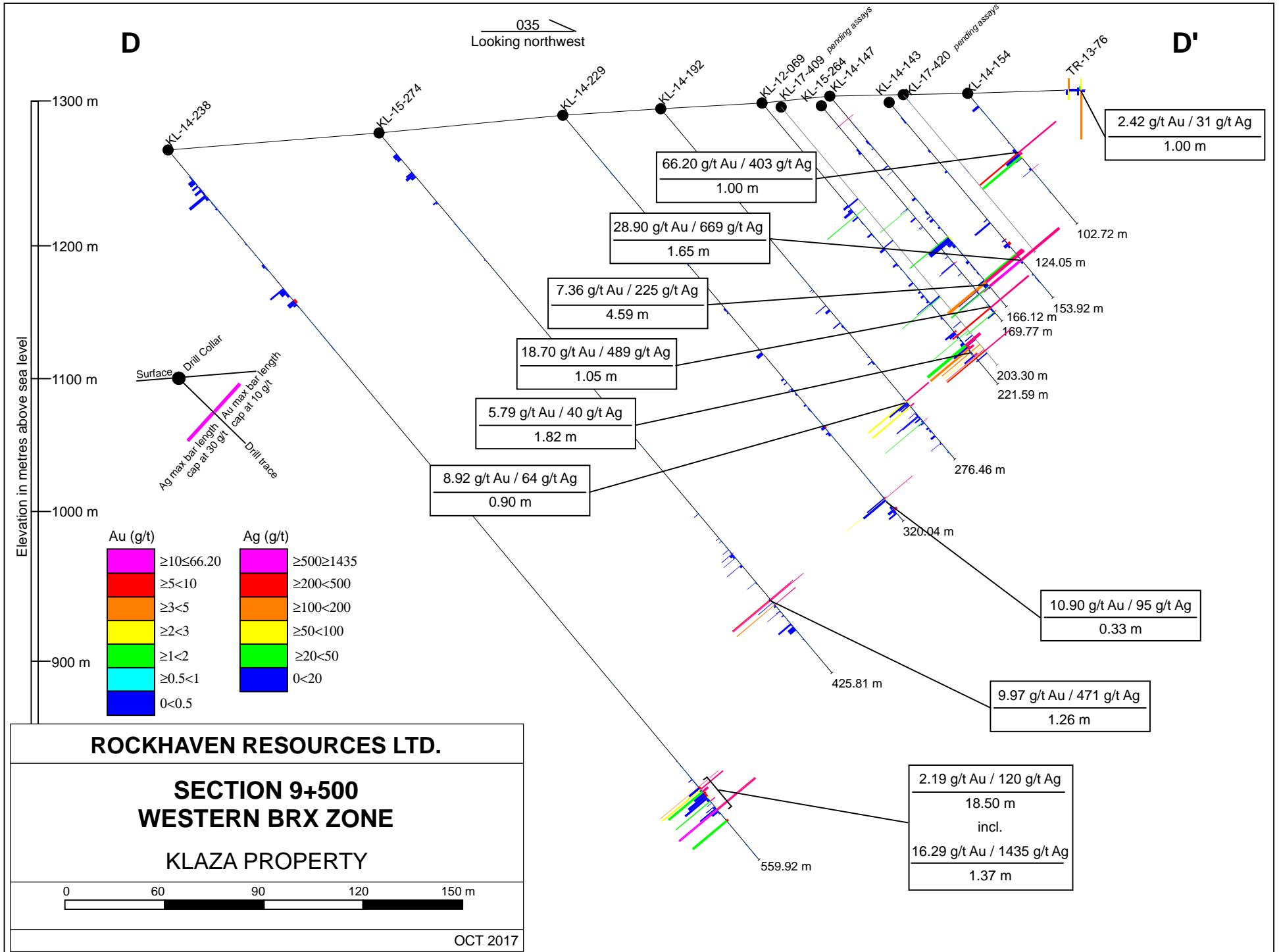
SECTION 9+350  
WESTERN BRX ZONE

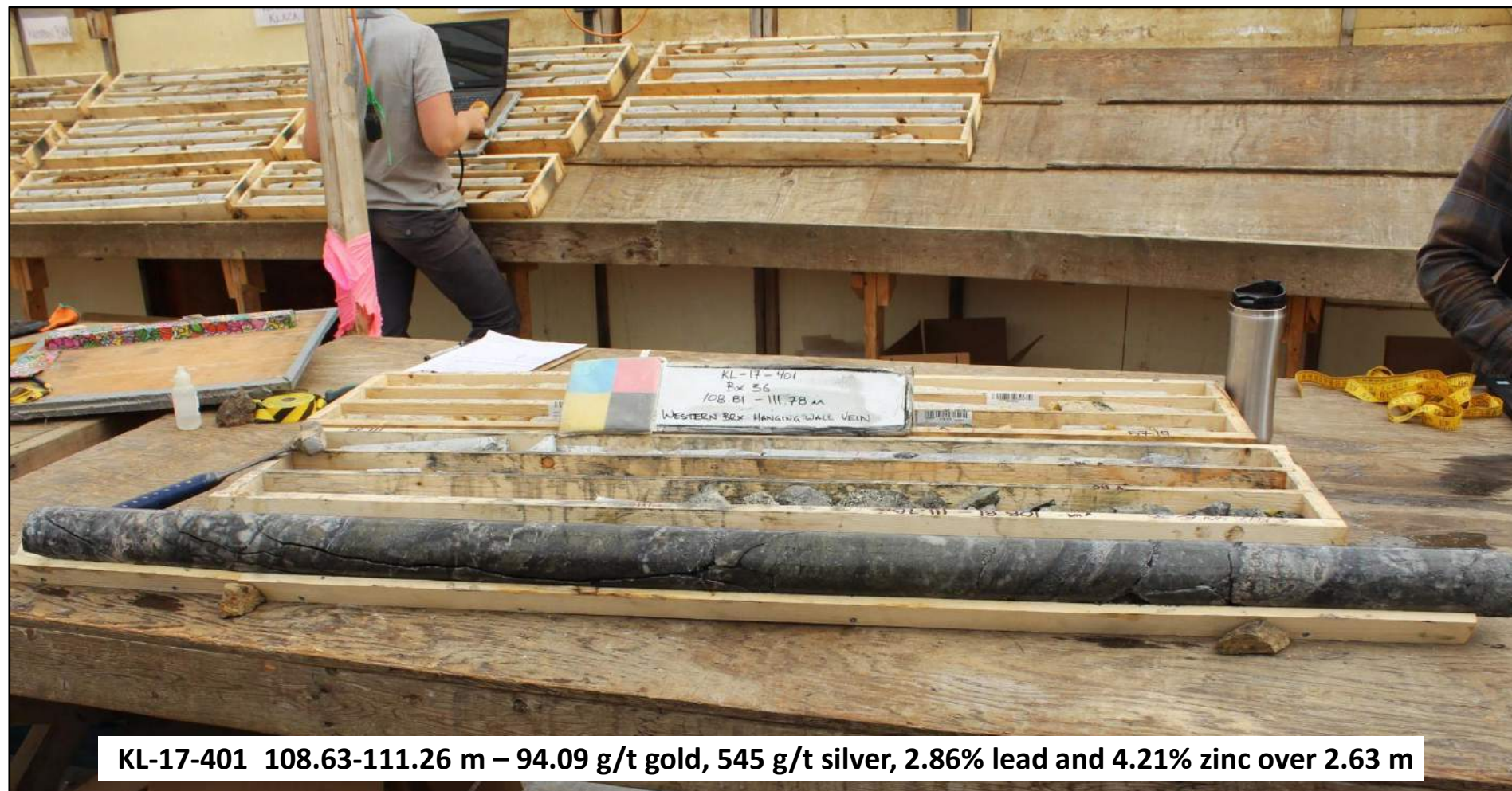
KLAZA PROPERTY



OCT 2017









## Core Photos October 16<sup>th</sup> 2017 Press Release



KL-17-401 108.63-111.26 m – 94.09 g/t gold, 545 g/t silver, 2.86% lead and 4.21% zinc over 2.63 m (detailed photos)







**KL-17-398 119.62-125.16 m – 17.80 g/t gold, 257 g/t silver, 1.28% lead and 1.81% zinc over 6.54 m**



**KL-17-400 100.11-102.64 m – 9.01 g/t gold, 150 g/t silver, 0.57% lead and 1.68% zinc over 2.53 m**