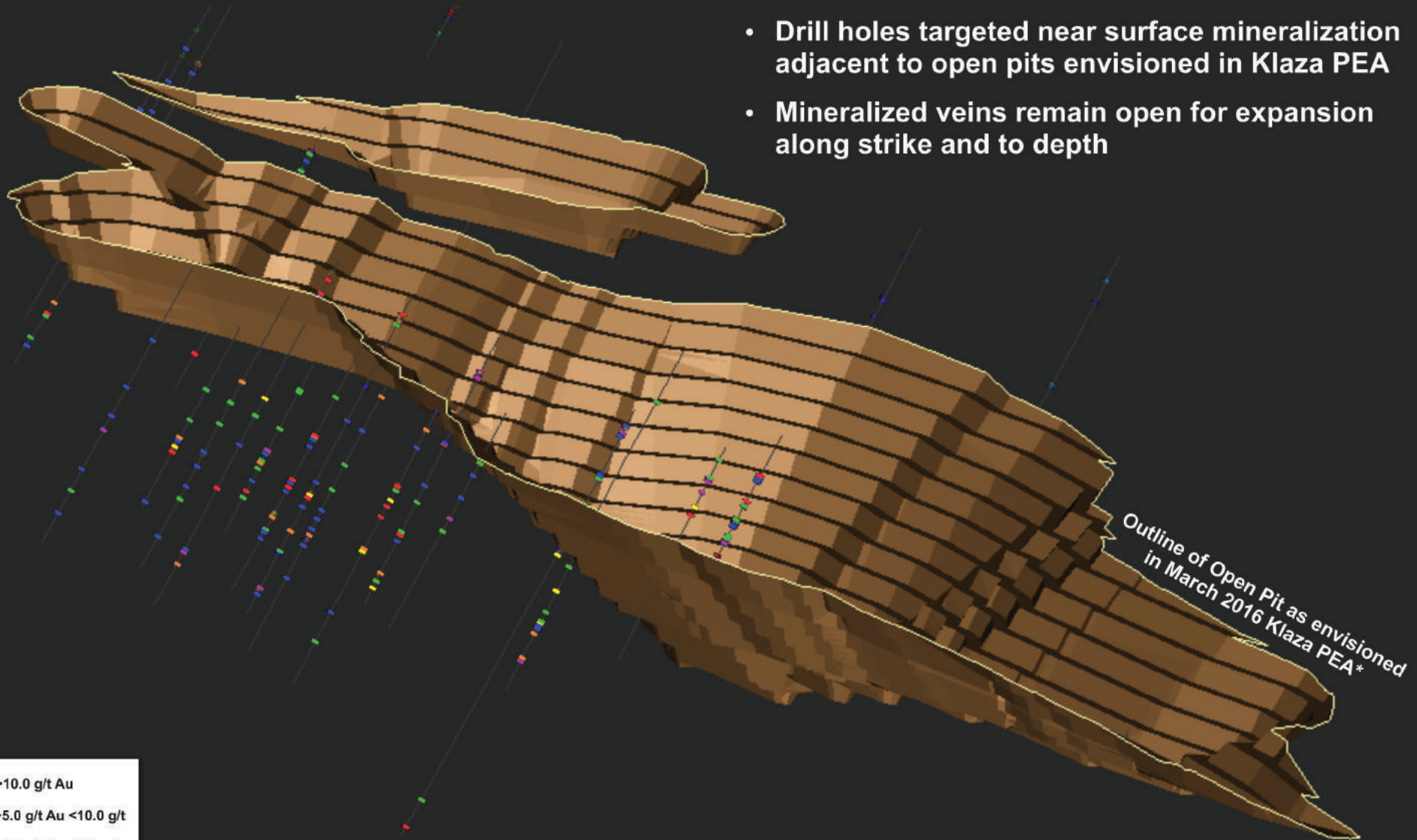








2016 Diamond Drill Hole Results At Central Klaza Zone

Looking South

- Drill holes targeted near surface mineralization adjacent to open pits envisioned in Klaza PEA
- Mineralized veins remain open for expansion along strike and to depth



Outline of Open Pit as envisioned
in March 2016 Klaza PEA*

	>10.0 g/t Au
	>5.0 g/t Au <10.0 g/t
	>3.0 g/t Au <5.0 g/t
	>2.0 g/t Au <3.0 g/t
	>1.0 g/t Au <2.0 g/t
	>0.5 g/t Au <1.0 g/t

*For additional information on the Klaza property PEA, please refer to the Klaza Property Technical Report dated March 1st, 2016 filed on SEDAR