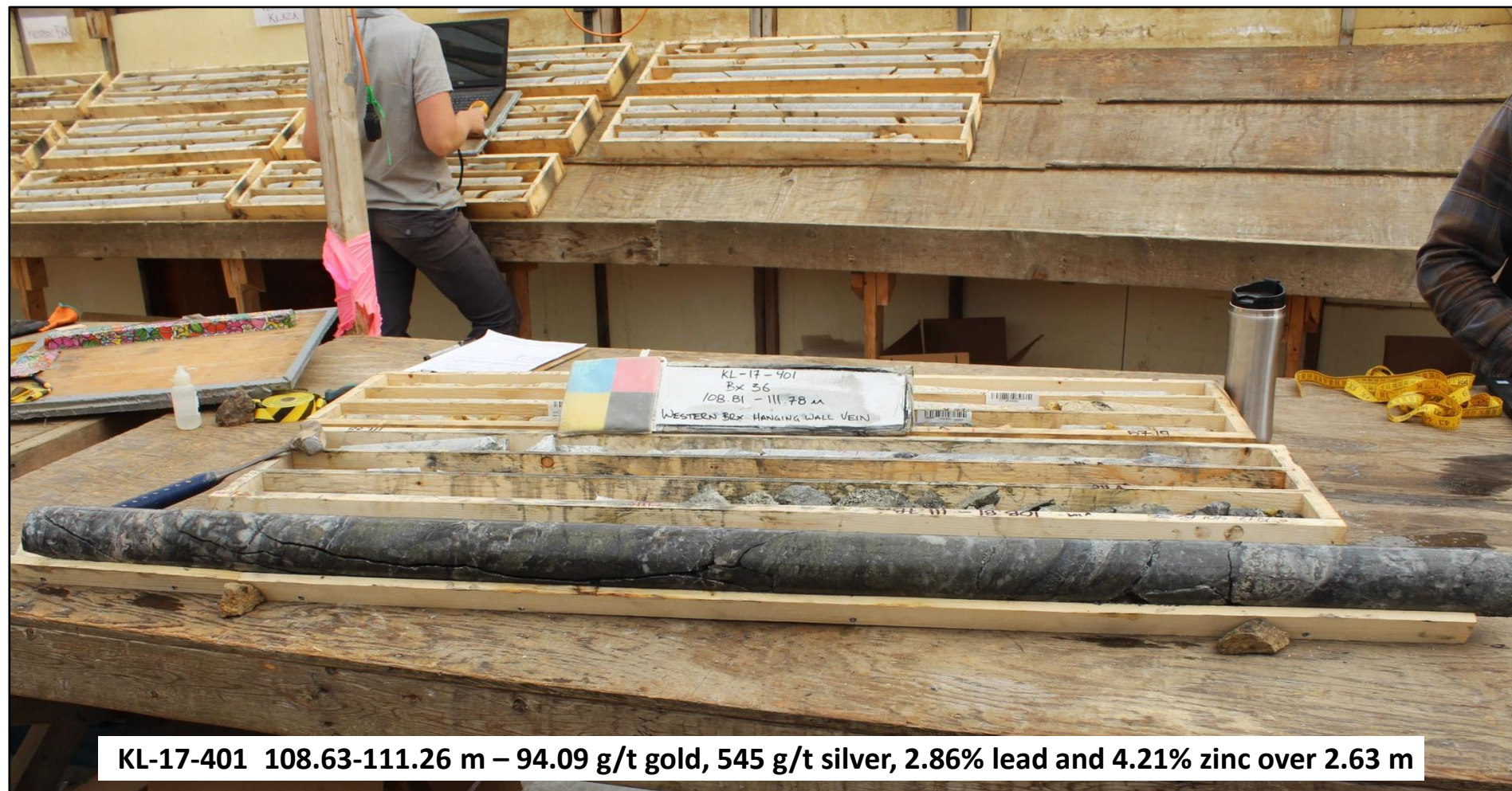
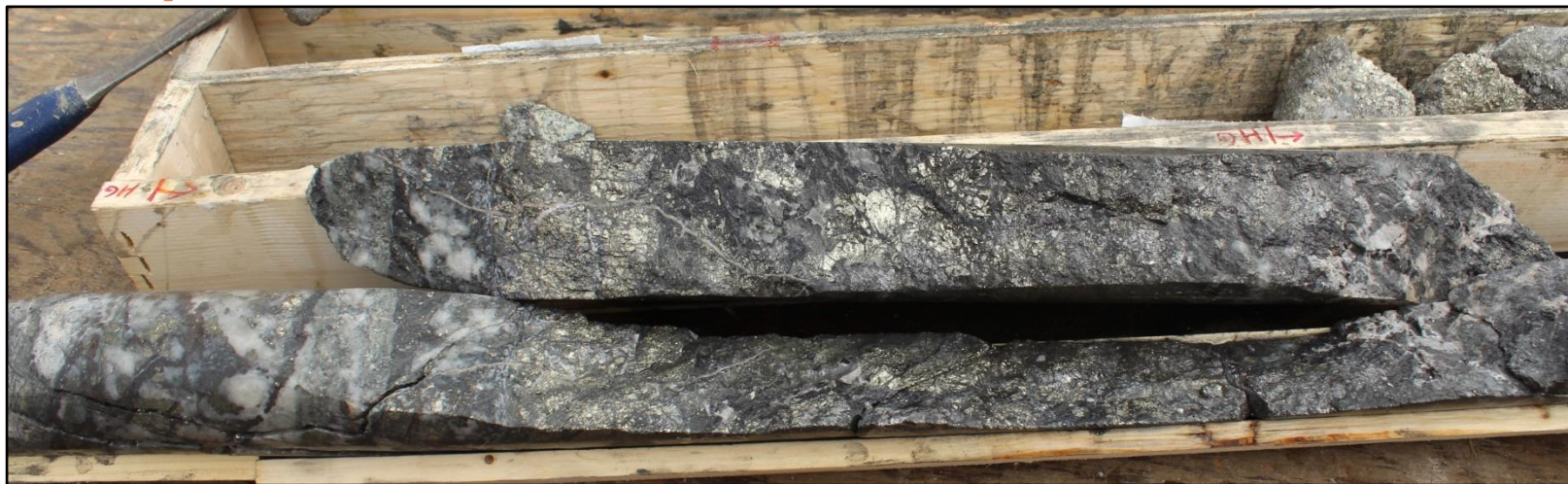


Core Photos October 16th 2017 Press Release

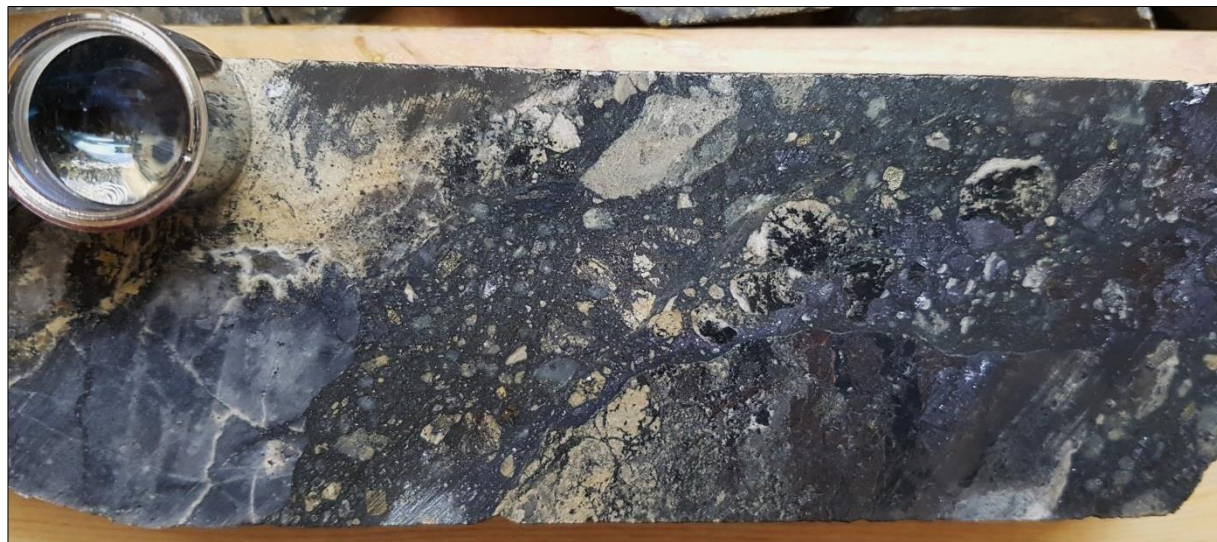


KL-17-401 108.63-111.26 m – 94.09 g/t gold, 545 g/t silver, 2.86% lead and 4.21% zinc over 2.63 m

Core Photos October 16th 2017 Press Release



KL-17-401 108.63-111.26 m – 94.09 g/t gold, 545 g/t silver, 2.86% lead and 4.21% zinc over 2.63 m (detailed photos)



Core Photos October 16th 2017 Press Release



KL-17-398 119.62-125.16 m – 17.80 g/t gold, 257 g/t silver, 1.28% lead and 1.81% zinc over 6.54 m



KL-17-400 100.11-102.64 m – 9.01 g/t gold, 150 g/t silver, 0.57% lead and 1.68% zinc over 2.53 m