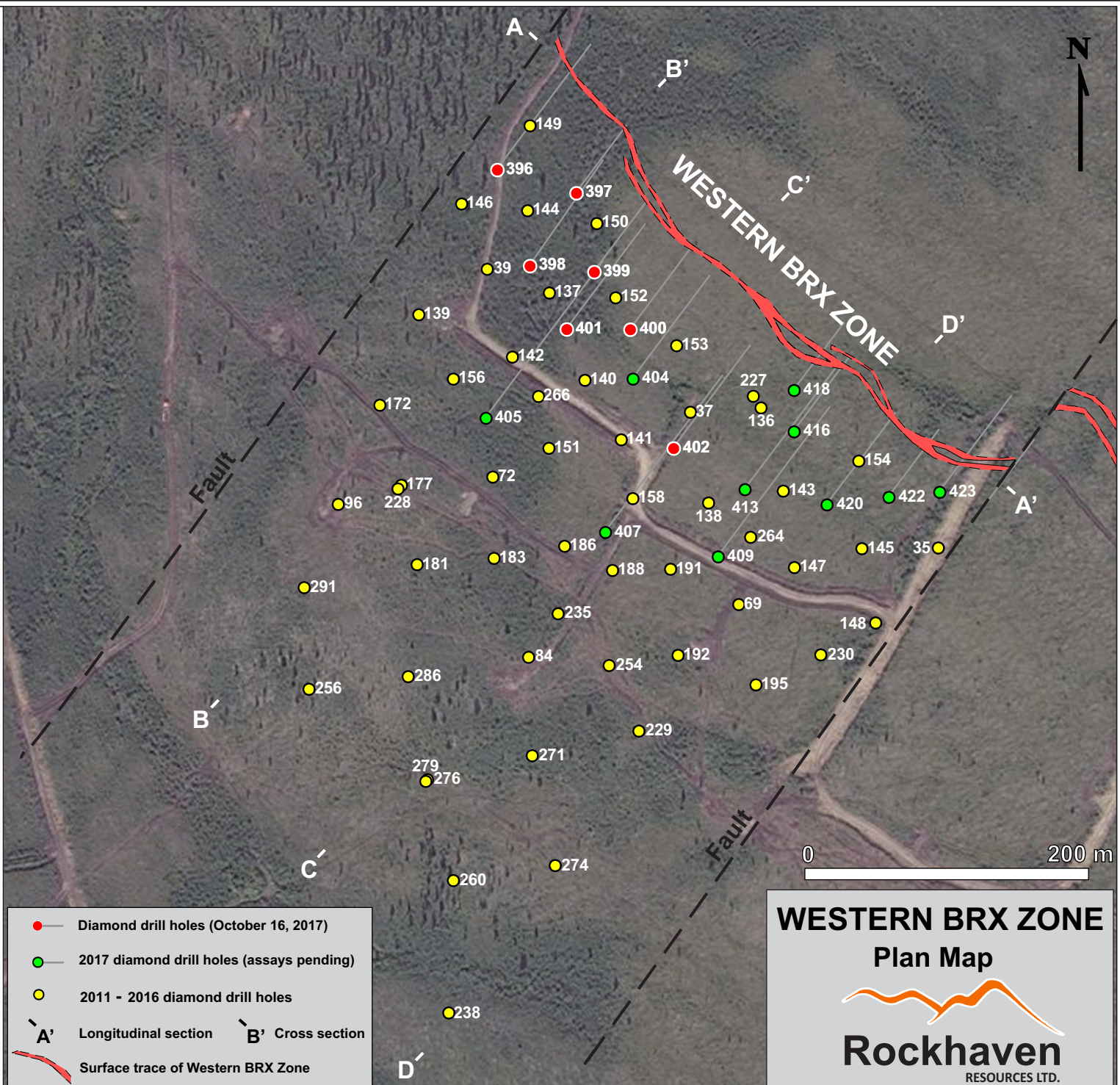


WBRX ZONE DRILL HIGHLIGHTS

Drill hole	Width (m)	Au (g/t)	Ag (g/t)
37	1.22	34.00	298
39	1.65	23.50	239
96	2.32	25.10	621
137	1.31	56.40	318
141	1.10	29.90	660
143	1.65	28.90	669
144	1.01	29.30	37
145	2.90	10.79	121
147	1.89	15.95	123
150	2.98	26.71	172
151	3.21	22.43	245
153	2.06	14.30	142
154	1.00	66.20	403
156	0.97	14.30	513
158	0.50	42.00	432
172	1.01	27.80	656
181	1.11	20.73	235
186	2.18	10.23	298
188	1.47	21.50	323
238	1.37	16.29	1,435
264	1.05	18.70	489
271	2.00	14.88	162
291	4.43	5.89	76
396	2.32	30.80	87
397	1.10	23.90	222
398	6.54	17.80	257
400	2.53	9.01	150
401	2.63	94.09	545



- Diamond drill holes (October 16, 2017)
- 2017 diamond drill holes (assays pending)
- 2011 - 2016 diamond drill holes
- A Longitudinal section B Cross section
- Surface trace of Western BRX Zone

WESTERN BRX ZONE
Plan Map

Rockhaven
RESOURCES LTD.